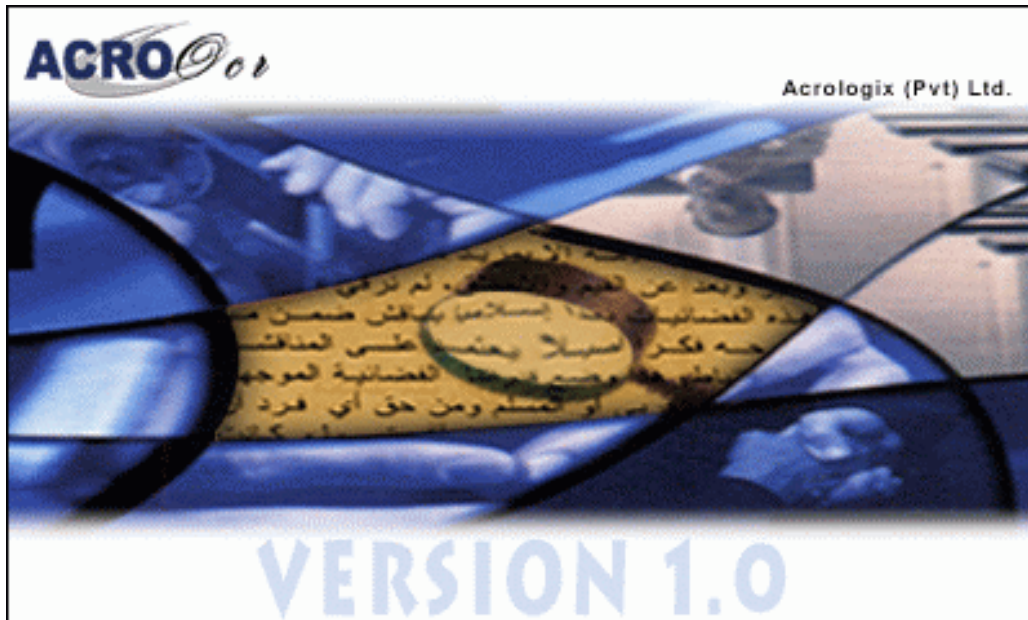


AcroOCR



Installation & Trouble shooting Guide

Main Application

Table of Contents

CHAPTER 1:	4
1. Hardware Requirements	5
2.. Software Requirements	6
2.1 Operating Systems.....	6
2.2 Enable Arabic in Windows 2000	6
CHAPTER 2:	14
INSTALLATION INSTRUCTIONS	14
1. Installation Procedure	15
1.1 Running the Setup	15
1.2 Setting the Destination Path.....	15
2.. Running the Application	16
CHAPTER 3:	17
Troubleshooting	18

AcroOCR

Acronyms

OCR

Optical Character Recognition

Imp

Important

Microsoft® Windows 2000™/
Microsoft® XP™

Microsoft and Windows are either registered trademarks or trademarks of Microsoft Corporation in the United States and/or other countries.

AcroOCR

AcroOcr is registered product of Acrologix (Pvt.) Ltd.

AcroOCR

Chapter 1: System Requirements

1. *Hardware Requirements*

Minimum: Intel Pentium I 233
Recommended: Intel Pentium II

Minimum Ram: 32 MB
Recommended Ram: 64 MB

Hard drive space required: 20 MB

Twian32 compliant scanner (optional)

2. Software Requirements

2.1 Operating Systems

Microsoft Windows 2000

Microsoft XP

2.2 Enable Arabic in Windows 2000

Arabic language has to be enabled on Windows 2000 from “Control panel > Regional Options” to successfully run AcroOCR.

Procedure:

Go to Control panel, Regional settings and then select Arabic from the “Language Settings” from the General’s Tab. Now click on Apply. You would be asked to restart your computer. Click Yes to Restart the Computer.

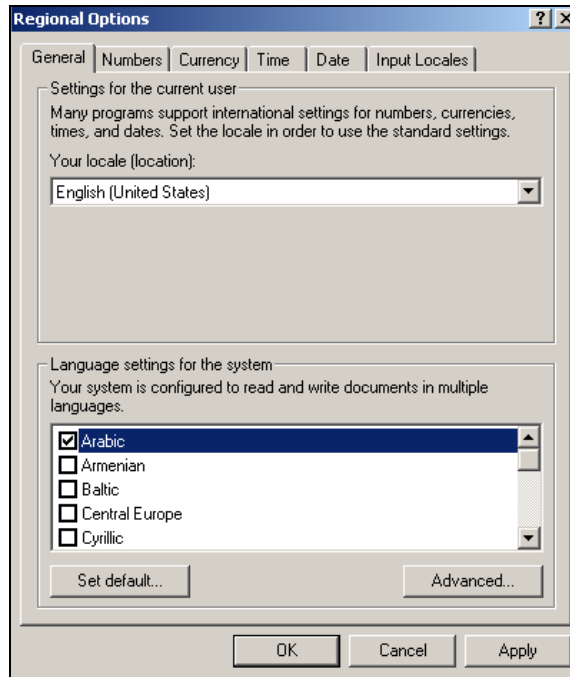


Figure 2.1- 'Regional Options'

Imp After restarting the system, go to Control panel >> Regional settings and click on “Set default” button. You would be asked to restart your computer. Click Yes to Restart the Computer.

After restarting the system, again go to Control panel >> Regional settings and click on “Input Locales” tab.

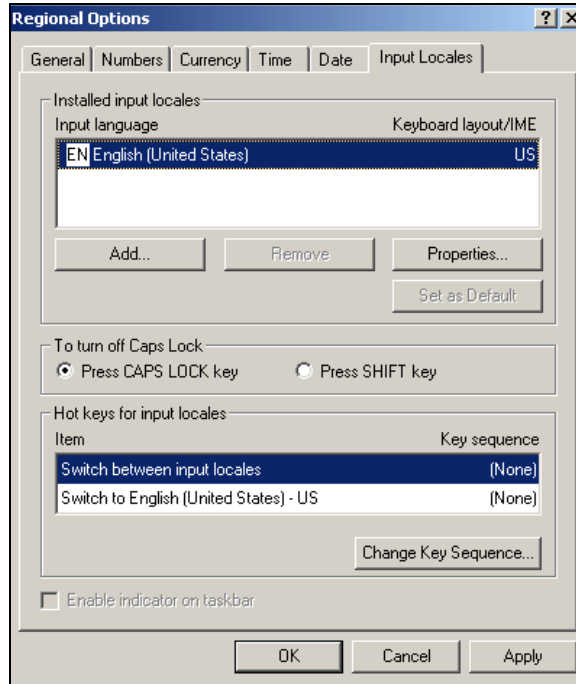


Figure 2.2- 'Setting the Input Locales'

Click on Add Button, and select Arabic (Saudi Arabia) from Input locale combo box. After setting the language, click on button 'OK'.



Figure 2.3- 'Setting Arabic'

Arabic would be installed on your system and would be shown in Input Locale Language Lists.

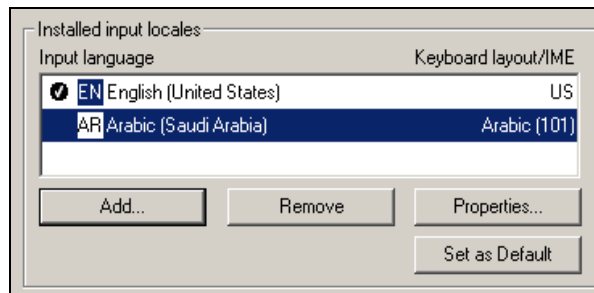


Figure 2.4 'Installed Input locales'

Tip *Enabling Arabic digits:*
Go to Control panel >> Regional settings and select “Arabic (Saudi Arabia)” from the combo box. This will enable Arabic digits in your applications. The effect of this change can also be seen in the “Numbers” tab (figure 2.5).

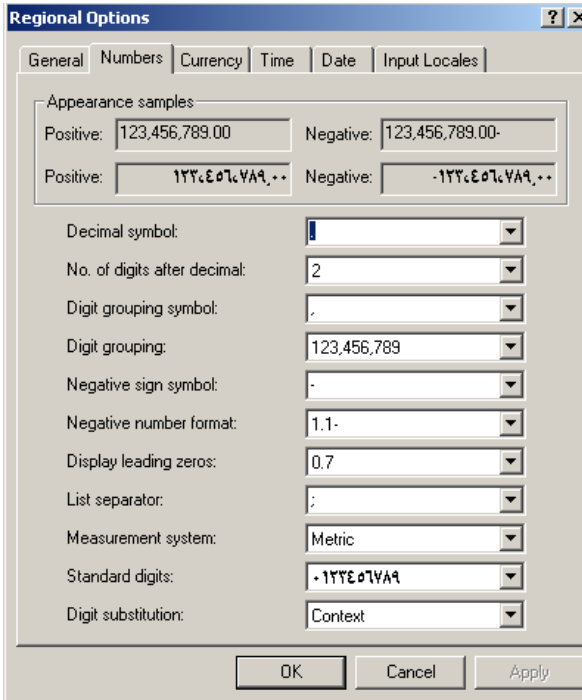


Figure 2.5 ‘Numbers tab displaying effect of Enabling Arabic digits’

2.3 Enable Arabic in Windows XP

Arabic language has to be enabled on Windows XP from “Control panel > Regional and Language Options” to successfully run AcroOCR.

Procedure:

Go to Control panel, “Regional & Language Options” and click on “Languages” tab.

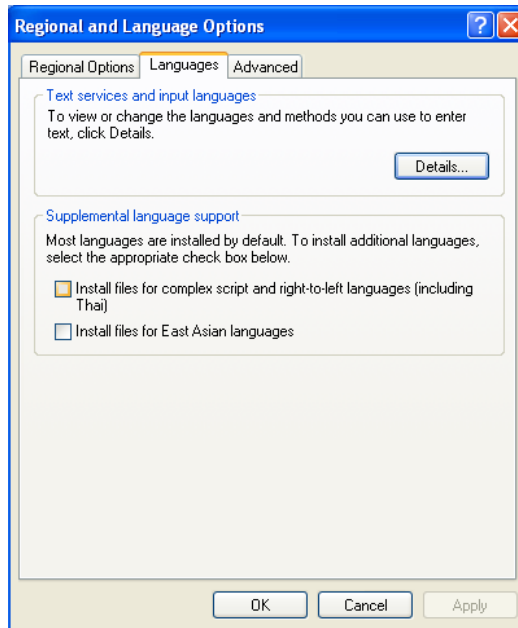


Figure 2.1- 'Language Options'

Select “Install files for complex script and right-to-left languages” under the Supplemental Language Support head. You would be asked to restart your computer. Click Yes to Restart the Computer.

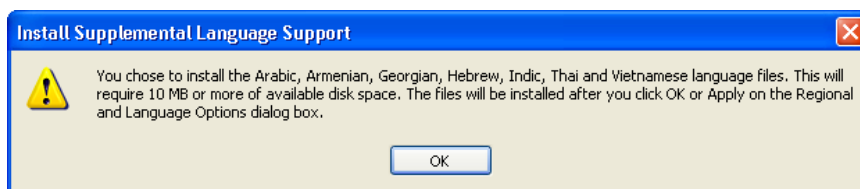


Figure 2.2- 'Language dialogue box'

After restarting the system, again go to Control panel >> “Regional & Language options” and click on “Languages” Tab (Figure 2.1). Click on Details button which will open up a “Text Services and Input Languages” dialog panel.

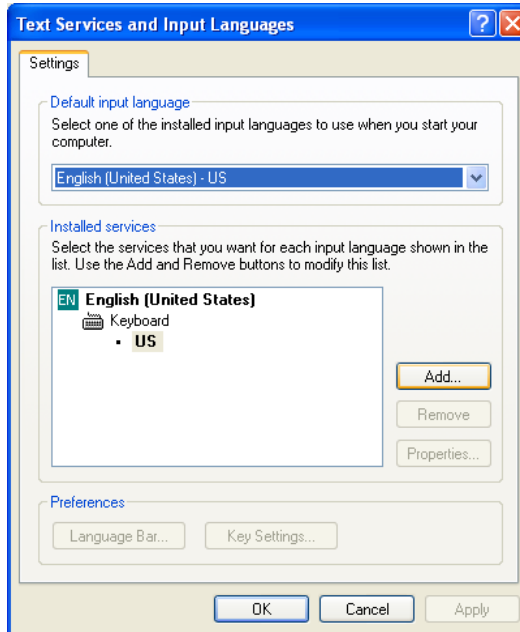


Figure 2.3- 'Text Services and Input Languages'

Click on "Add" Button, and select Arabic (Saudi Arabia) from "Input languages" combo box. After setting the language, click on button 'OK'.

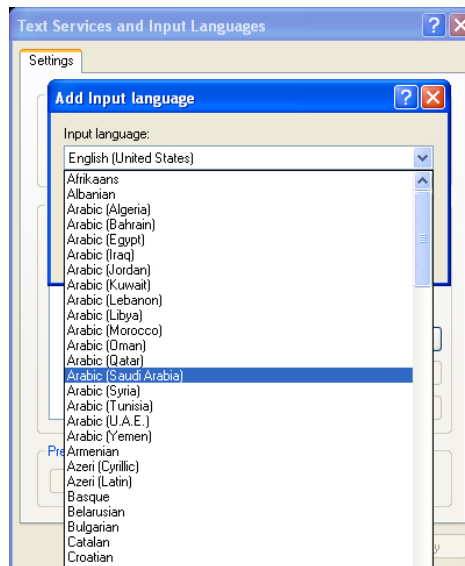


Figure 2.4- 'Setting Arabic'

Press "Ok" after selecting Arabic (Saudi Arabia) from the "Add Input Language". Press "Apply" button. Addition of Arabic Language is complete. We need to make a few more changes for AcroOCR under the "Regional and Language Settings".

Press “Language Bar” button and uncheck “Turn off advanced text services”. The disabled services would be alterable now. For now press “OK” button.

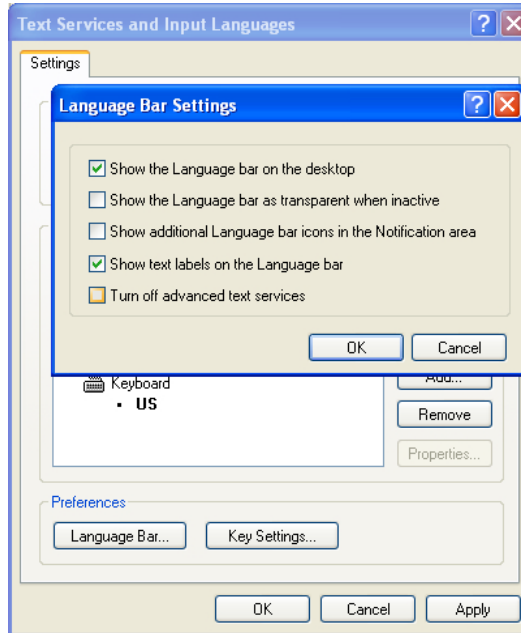


Figure 2.5 ‘Uncheck Turn off advanced text services’

The Language bar will be enabled now and will appear on the top right corner of the desktop or on the toolbar depending on your system settings.



Figure 2.6 ‘Language Bar on desktop’

Click on “Regional Options” tab and select “Arabic (Saudi Arabia)” from the combo box.

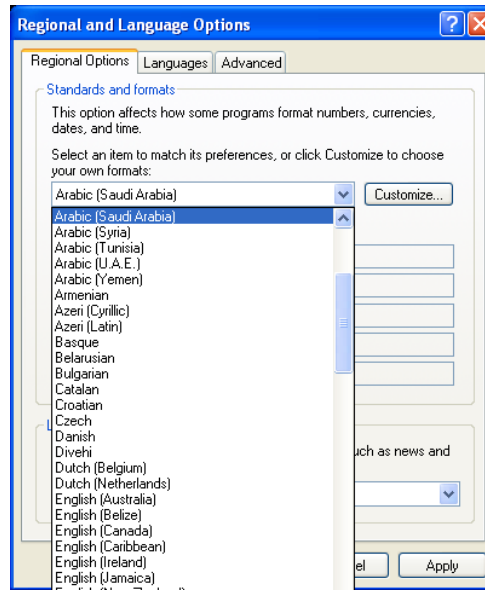


Figure 2.7 'Regional Option Tab'

Imp Click on "Advanced" tab and select "Arabic (Saudi Arabia)" from the combo box. You would be asked to restart your PC. Click Yes to Restart the Computer.

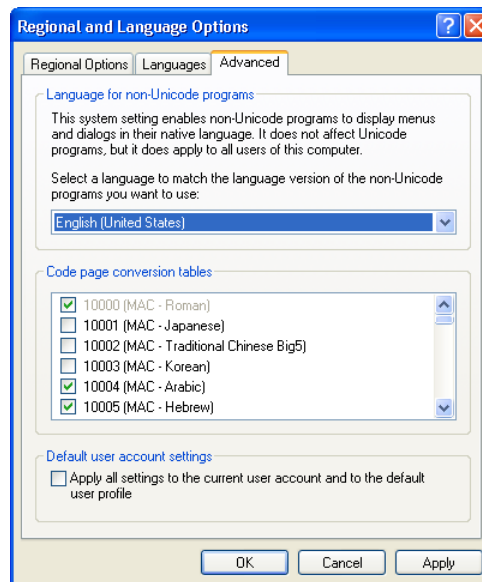


Figure 2.8 'Advanced Option Tab'

After restart Arabic would be installed on your system and ready to be used by AcroOCR application.

Tip *Enabling Arabic digits:*
Go to Control panel >> “Regional and Language options” and select “Arabic (Saudi Arabia)” from the combo box. This will enable Arabic digits in your applications. The effect of this change can also be seen in the figure (figure 2.9).

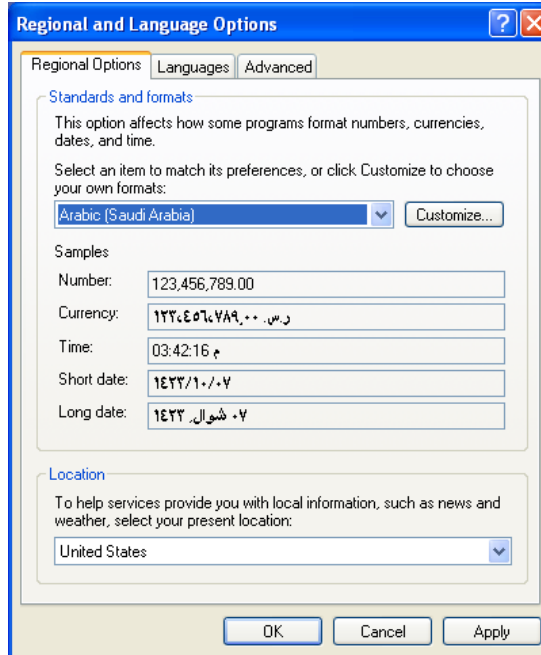


Figure 2.9 ‘Arabic Enabled in Windows XP’

AcroOCR

Chapter 2: Installation Instructions

1. Installation Procedure

1.1 Running the Setup

Run "Setup.exe" for installing the application and follow the instructions.

1.2 Setting the Destination Path

By default, the destination path of AcroOCR is "C:\AcroOCR".

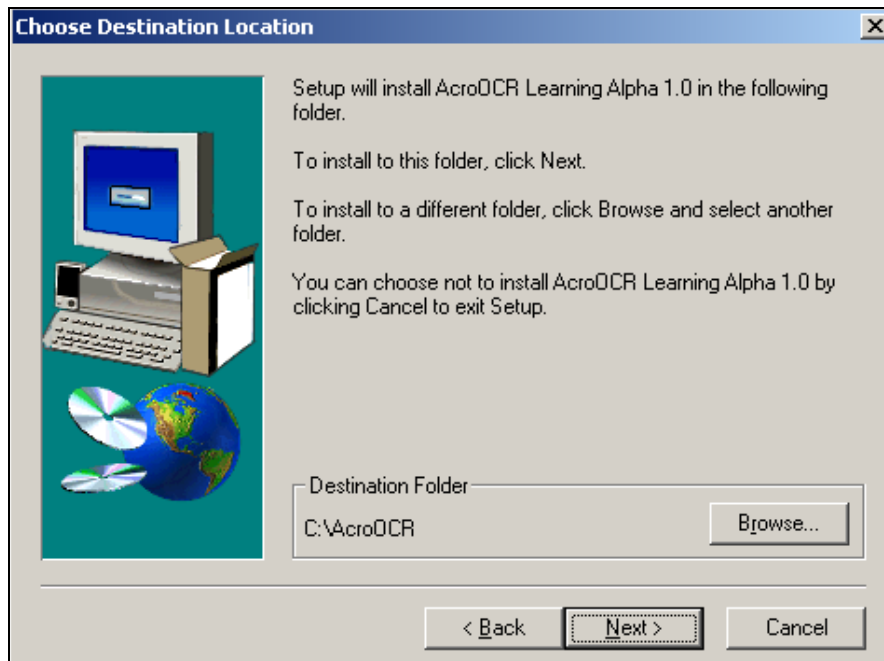


Figure 1.1- 'Destination Folder'

Destination Path Issues

1. If you do not want to install the application on this path, Please install it on a path, which does not include space in it.

For example, do not install it on "C:\Program Files\AcroOCR", as it has a space in "Program Files"

2. Please keep the folder name up to 8 characters, in which the application is going to be installed.

For example, do not install it on “D:\AcroOCRMainApp”, as the folder name is longer than 8 characters.

Follow the instructions of the setup wizard for the rest of the installation procedure.

2. *Running the Application*

You can Run the application from Start Menu > Program Files > AcroOCR for Arabic Alpha 1.0 > AcroOCR for Arabic.

AcroOCR

Chapter 3: Troubleshooting

Troubleshooting

Problem: How do I enable Arabic on my computer?

Solution: For Windows 2000 refer to section 2.2
For Windows XP refer to section 2.3

Problem: I cannot type Arabic digits.

Solution: For Windows 2000 see Enabling Arabic Digits tip in section 2.2
For Windows XP see Enabling Arabic Digits tip in section 2.3

Problem: How do I add Images to my application?

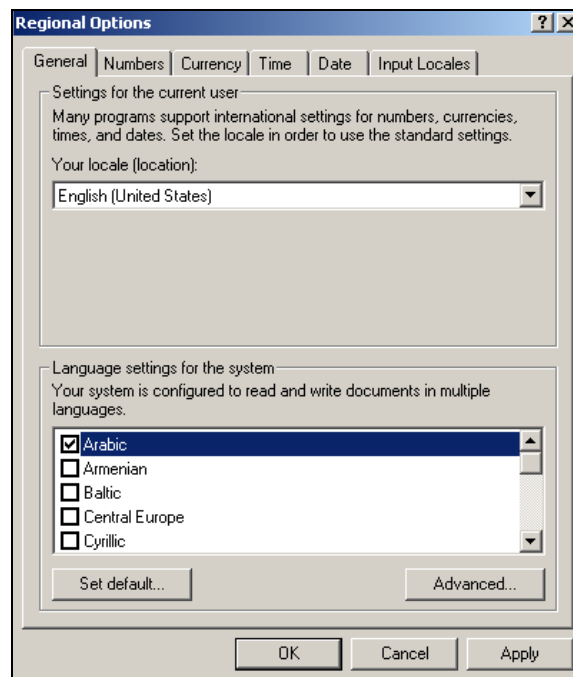
Solution: You can add the Image by pressing the + Button



Problem: When I run AcroOCR, I do not see the output in Arabic, rather I see “?” signs.

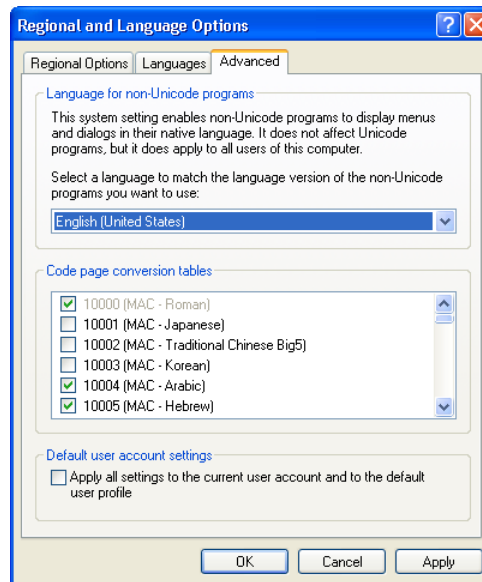
Solution: Arabic is not enabled in your system.

For Windows 2000



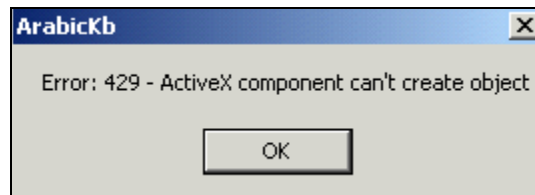
Go to Control panel >> Regional settings and click on “Set default” button. You would be asked to restart your computer. Click Yes to Restart the Computer.

For Windows XP



Click on “Advanced” tab and select “Arabic (Saudi Arabia)” from the combo box. You would be asked to restart your PC. Click Yes to Restart the Computer.

Problem: When I run Learning Application and start training the Image, I get the following error.



Solution: The ActiveX component for Arabic Keyboard is not registered on your machine. To register the ActiveX component go to C:\AcroOCR >> ArKeyBoard >> Register.bat. Clicking on Register.bat would install the ActiveX component.

Problem: I am unable to see the Arabic Keyboard.

Solution: The Arabic keyboard is invoked by clicking on the icon in the system tray.

